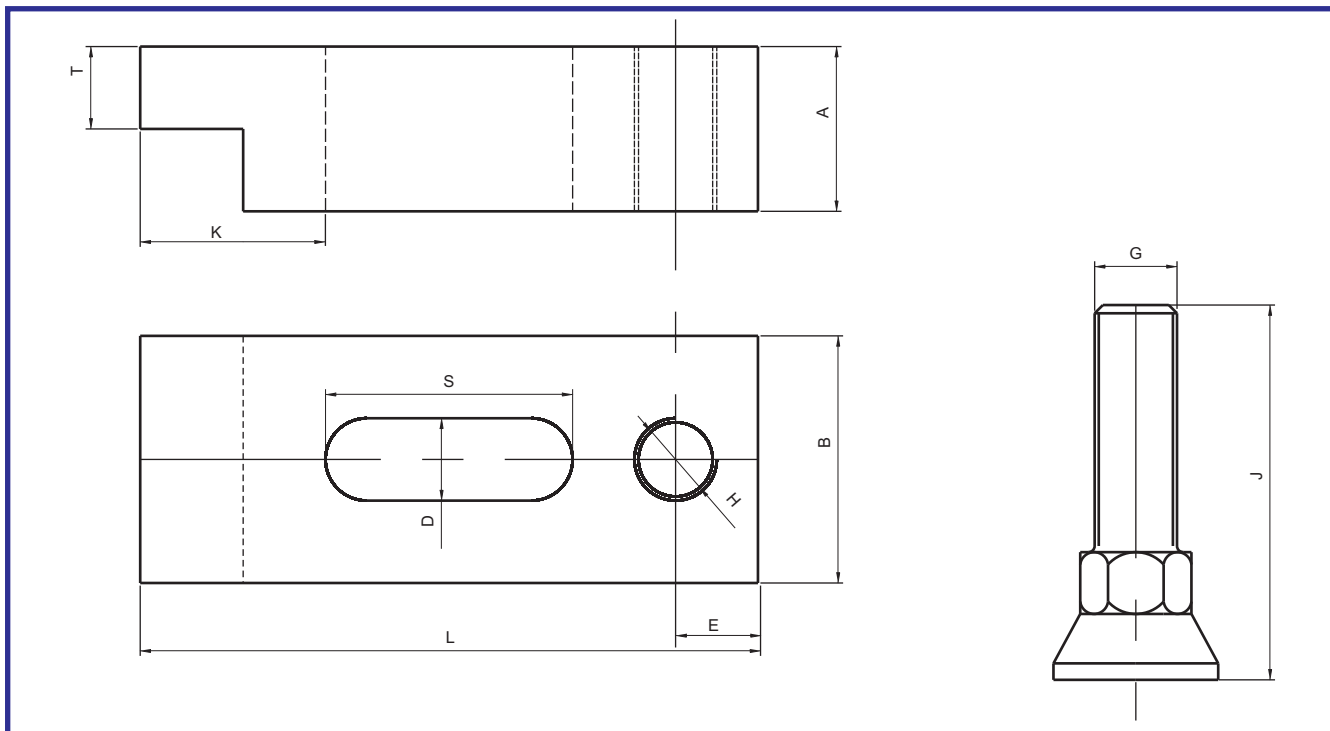


## ► Mould Clamp With Heavy Support Bolt (PMCH)



**Material :-** En8d

**Hardness :-** Core 28 - 30 HRC (Toughened)

**Surface Treatment :-** Blackodised



Code	BOLT SIZE	A	B	DxL	S	T	K	H	E	Support Bolt	
										GXJ	Hex A/F
											X Base
PMCH- 12115S	M12	24	38	14X115	65	15	20	M16	15	M16x55L	19X35
PMCH- 12115L	M12	24	38	14X115	65	15	20	M16	15	M16X90L	19X35
PMCH- 16130S	M16	31	48	18X130	70	20	25	M20	18	M20X60L	24X40
PMCH- 16130L	M16	31	48	18X130	70	20	25	M20	18	M20X90L	24X40
PMCH- 16160S	M16	31	48	18X160	90	20	30	M20	20	M20X60L	24X40
PMCH- 16160L	M16	31	48	18X160	90	20	30	M20	20	M20X90L	24X40
PMCH-20140S	M20	38	60	22X140	70	25	35	M24	18	M24X60L	27X50
PMCH-20140L	M20	38	60	22X140	70	25	35	M24	18	M24X100L	27X50
PMCH-20160S	M20	38	60	22X160	90	30	35	M24	20	M24X60L	27X50
PMCH-20160L	M20	45	60	22X160	90	30	35	M24	18	M24X100L	27X50
PMCH-20200	M20	45	60	22X200	110	30	45	M24	22	M24X100L	27X50
PMCH-24200	M24	48	78	26X200	105	35	45	M27	25	M27X100L	30X55

**Order Type :-** Code

**Example :-** PMCH - 20160L